



LEGEND

- 1503.6 Lot Corner Elevation
- 2022 House Number

ABBREVIATIONS

- MAE Maintenance Access Easement
- MGE Minimum Recommended Ground Elevation
- SF Square Feet
- UE Utility Easement

CENTERLINE CURVE DATA			
CURVE NO.	CHORD DIST.	BEARING	RADIUS
C1	173.50'	S74°49'27"E	300.00'
C2	143.86'	S15°30'19"E	300.00'
C3	144.63'	N74°34'15"E	300.00'
C4	240.91'	S15°26'16"E	500.00'

NOTE

All Dimensions on Curves are CHORD Dimensions
See Recorded Plat for Complete Details

NOTES:

COVENANTS, CONDITIONS AND RESTRICTIONS APPLICABLE TO EASEMENTS OVER LOT 2 IN BLOCK 21; LOTS 5, 9, 10, 13, & 14 IN BLOCK 22; & TRACT 9.

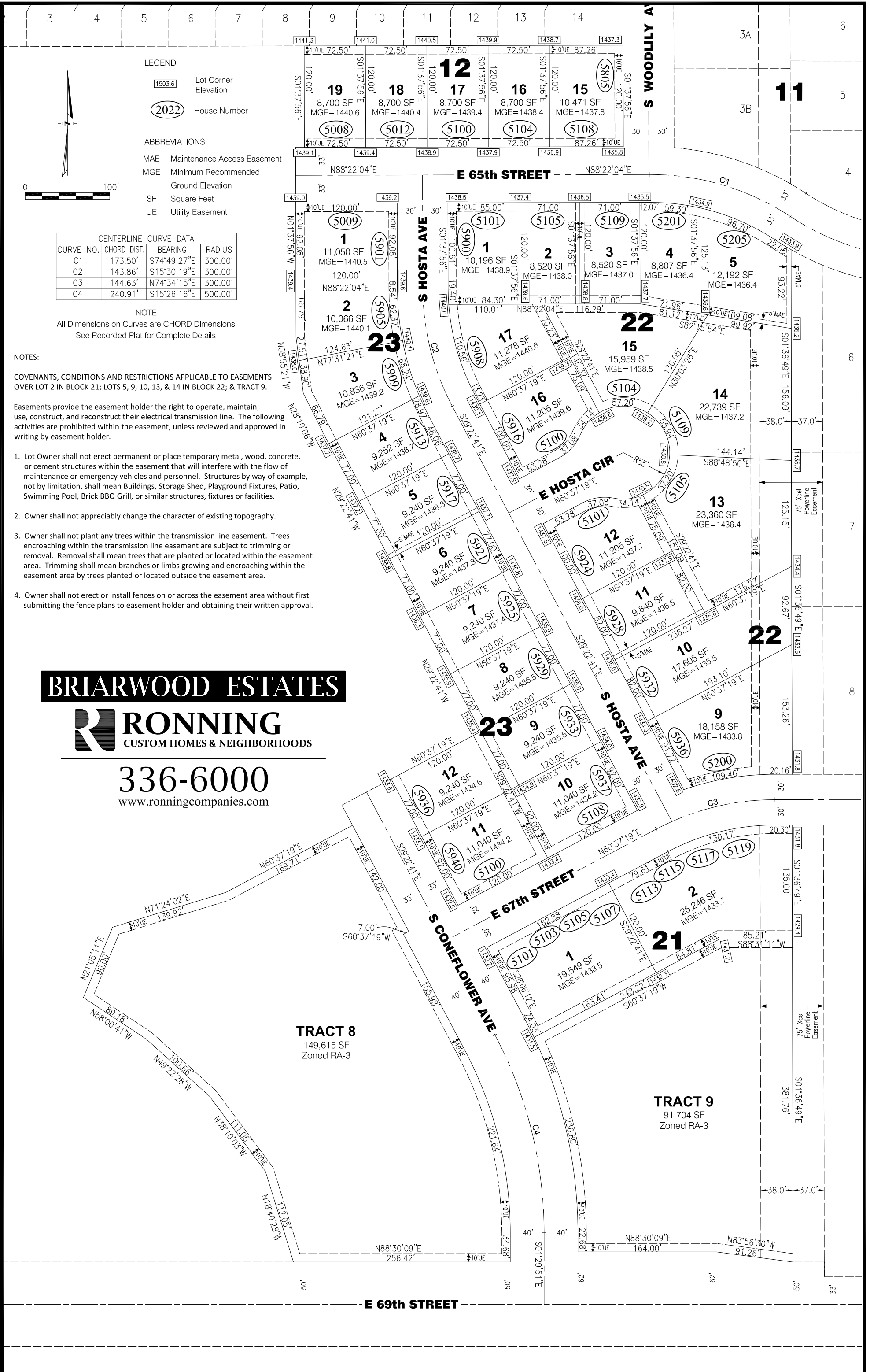
Easements provide the easement holder the right to operate, maintain, use, construct, and reconstruct their electrical transmission line. The following activities are prohibited within the easement, unless reviewed and approved in writing by easement holder.

1. Lot Owner shall not erect permanent or place temporary metal, wood, concrete, or cement structures within the easement that will interfere with the flow of maintenance or emergency vehicles and personnel. Structures by way of example, not by limitation, shall mean Buildings, Storage Shed, Playground Fixtures, Patio, Swimming Pool, Brick BBQ Grill, or similar structures, fixtures or facilities.
2. Owner shall not appreciably change the character of existing topography.
3. Owner shall not plant any trees within the transmission line easement. Trees encroaching within the transmission line easement are subject to trimming or removal. Removal shall mean trees that are planted or located within the easement area. Trimming shall mean branches or limbs growing and encroaching within the easement area by trees planted or located outside the easement area.
4. Owner shall not erect or install fences on or across the easement area without first submitting the fence plans to easement holder and obtaining their written approval.

BRIARWOOD ESTATES



336-6000
www.ronningcompanies.com



TRACT 8
149,615 SF
Zoned RA-3

TRACT 9
91,704 SF
Zoned RA-3