

E 57th STREET

S SYCAMORE AVE

S HOSTA AVE

TRACT 4
ZONED C-2
(Neighborhood Commercial)
3.76 ac. or
163,920 SF±

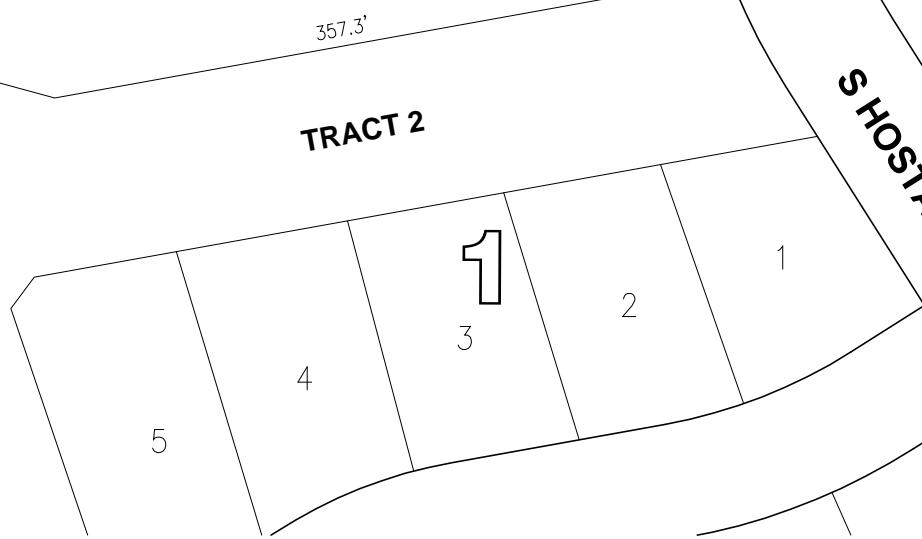
TRACT 5
ZONED C-2
(Neighborhood Commercial)
1.23 ac. or
53,540 SF±

TRACT 3
ZONED CN
(Conservation)
4.09 ac.

TRACT 2
ZONED CN
(Conservation)
2.83 ac.

TRACT 6
ZONED LW
(Live/Work)
2.25 ac. or
98,080 SF±

75' NSP
Easement



Briarwood Estates

RONNING
COMPANIES

www.ronningcompanies.com

336-6000