

E 57th STREET

S SYCAMORE AVE

S HOSTA AVE

**TRACT 4**  
ZONED C-2  
(Neighborhood Commercial)  
3.76 ac. or  
163,920 SF±

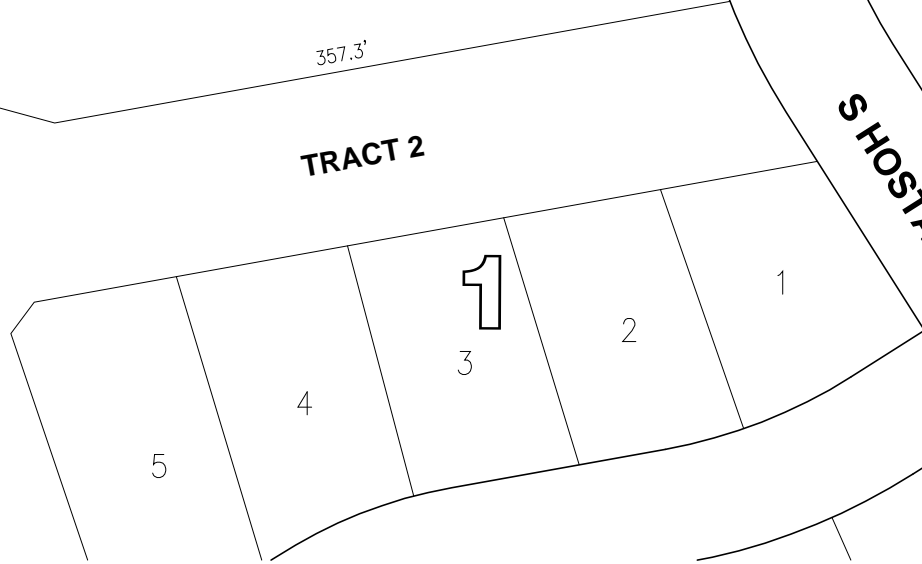
**TRACT 5**  
ZONED C-2  
(Neighborhood Commercial)  
1.23 ac. or  
53,540 SF±

**TRACT 3**  
ZONED CN  
(Conservation)  
4.09 ac.

**TRACT 2**  
ZONED CN  
(Conservation)  
2.83 ac.

**TRACT 6**  
ZONED LW  
(Live/Work)  
2.25 ac. or  
98,080 SF±

75' NSP  
Easement



Briarwood Estates

**RONNING**  
COMPANIES

www.ronningcompanies.com

**336-6000**